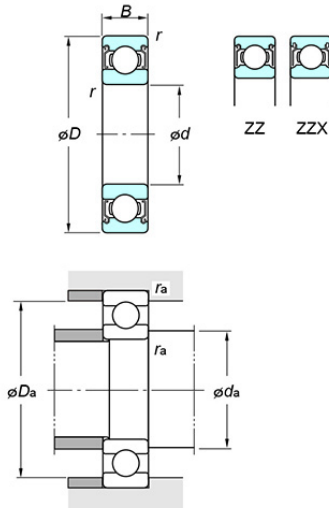


Deep groove ball bearings - Single-row - Shielded/sealed type - Shielded ZZ



Bearing No. 6005 ZZ

Specifications

(Boundary dimensions ...etc)

d(mm)	25
D(mm)	47
B(mm)	12
r(min.)(mm)	0.6
Basic load ratings : Cr(kN)	12.6
Basic load ratings : C0r(kN)	5.85
Fatigue load limit : Cu(kN)	0.380
factor : f0(l)	14.5
Limiting speeds(Grease lub.)(min-1)	15000
Limiting speeds(Oil lub.)(min-1)	

Mounting dimensions

da(min.)(mm)	29
da(max.)(mm)	29.5
Da(max.)(mm)	43
ra(max.)(mm)	0.6

Refer.

(Refer.)Mass(kg)	0.080
------------------	-------